

## LGF CARMALT GARDENS, SW15

Approx. gross internal area 399 Sq Ft. / 37.1 Sq M

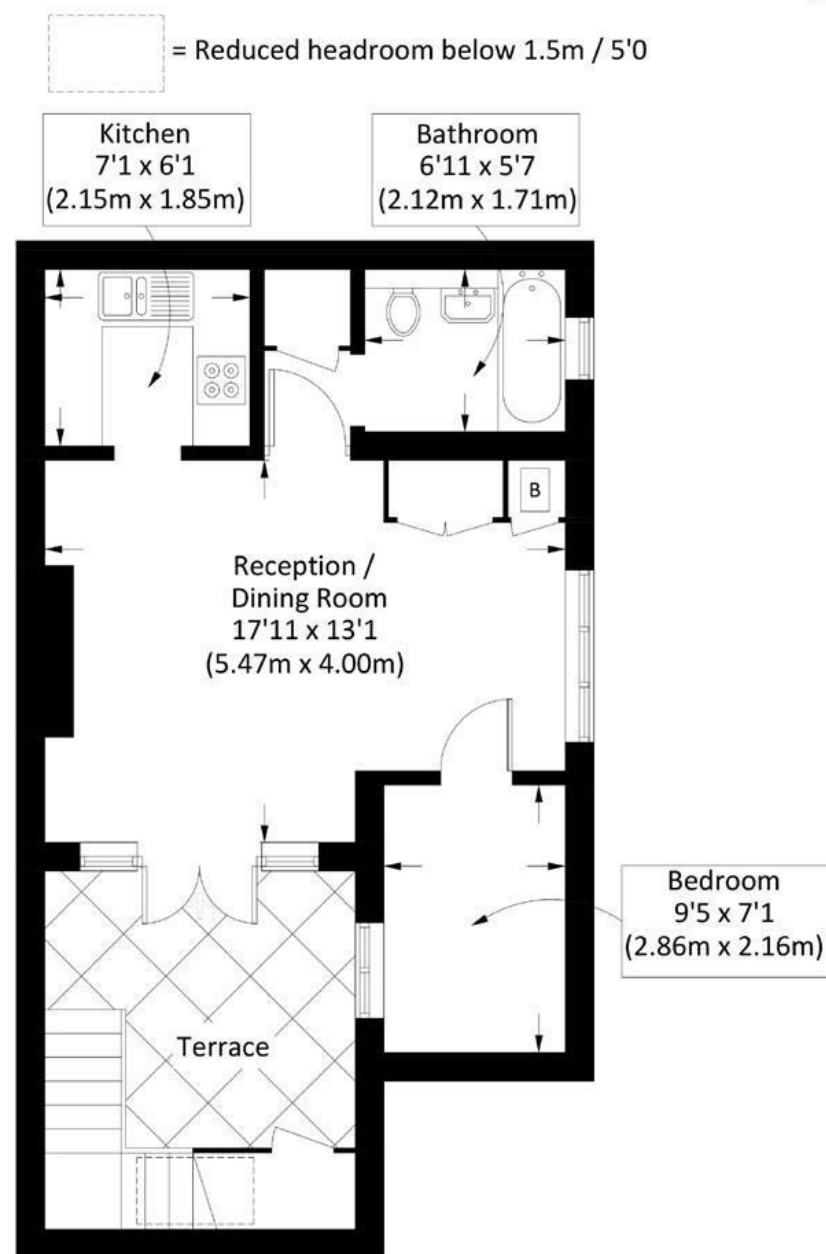


Illustration for identification purposes only, measurements are approximate, not to scale. FloorplansUsketch.com © 2020 (ID621444)

**DISCLAIMER**•These particulars are intended to give a fair and substantially correct overall description for the guidance of intending purchasers and do not constitute an offer or part of a contract. Prospective purchasers and/or lessees ought to seek their own professional advice.

•All descriptions, dimensions, areas, references to condition and necessary permissions for use and occupation and other details are given in good faith and are believed to be correct, but any intending purchasers should not rely on them as statements or representations of fact, but must satisfy themselves by inspection or otherwise as to the correctness of each of them.  
•All measurements are approximate.



## Carmalt Gardens, Putney, SW15

A beautifully presented one bedroom flat with a private patio garden on the lower ground floor of this impressive period house in the heart of Putney. Offered on an unfurnished basis, the accommodation comprises a bright and spacious reception room with access to the private patio, fully fitted kitchen, bedroom and smart bathroom with a shower over the bath. This lovely flat is ideally located within a short walk of all the amenities and transport Putney has to offer. Available mid/late April 2026.



- ONE BEDROOM FLAT
- BRIGHT RECEPTION ROOM
- DOUBLE BEDROOM
- CLOSE TO HIGH STREET
- COUNCIL TAX BAND C
- PRIVATE PATIO
- FITTED KITCHEN
- BATHROOM
- EPC D

Per Calendar Month  
**£1,650 Per Calendar Month**



